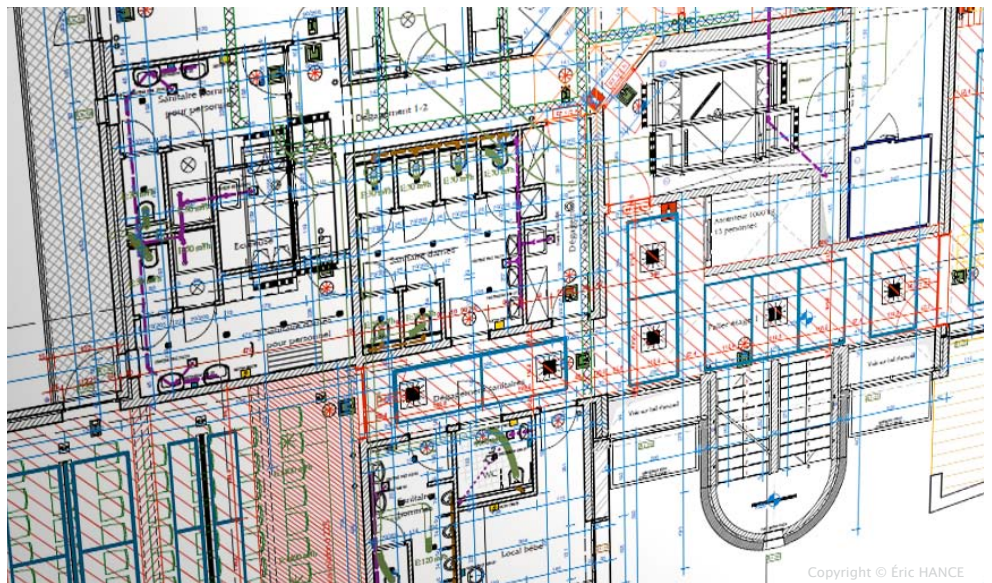


KutchCAD® 2015

Thanks to its compatibility with over twenty estimate and bills of quantities softwares on the market, KutchCAD® 2015 is the tool for professionals as demanding in terms of efficiency in modifications, information processing, and project monitoring as they are with management of written material.

Make your bills of quantities and quotes from the digital model of your projects. Dedicated to economists, craftsmen, and building contractors, KutchCAD® 2015 also allows you to manage bills of quantities, estimates, special technical specifications, and notices of projects processed by third parties.



Copyright © Eric HANCE

KutchCAD® 2015 imports project files processed by third parties to DXF, DWG, PDF, bitmaps, and IFC formats (under development). The software is available in two versions.

KutchCAD® Lite

This lite version offers, in direct reading, a bill of quantities of works selected on the top views or the 3D model. The values are displayed in a window that is superimposed on any software in order to copy/paste the amounts in the corresponding cells of the estimate software..

KutchCAD® Full

This version can be connected to libraries from more than twenty estimate and bills of quantities softwares.

One or more works in the library can be allocated to different quantities recognized by KutchCAD® (*units, lengths, surfaces, volumes*), thus

generating the BOQ in the client's estimate software. Calculation formulas may be created for obtaining the bill of quantities for non-drawn elements without needing to represent them.



• Full integration of written documents

Decomposition of overall price, special technical specifications, and descriptive notices are integrated in KutchCAD®. The estimate becomes a view of KutchCAD® just like a 2D or 3D view. Libraries are created directly in KutchCAD® or are connected to one in plug-in when they originate from

quotation software interfaced with it. For faster input or for a reorganization of the works in lots, chapters and subchapters, libraries can be exported into Excel® and reimported after modification. Written records can be accessed beginning from the project organization or from the contextual menu calling the quote template. So you can switch between 2D and 3D views of the estimate, and vice versa, while managing your changes in real time. KutchCAD® has an interactive report generator that allows page layout and customization of written documents (*logo, columns, page breaks, etc.*).

• Managing floors and layers

The bill of quantities derived from the 3D model is not only for making an economic estimate. The design elements can be stored in separate layers and floors in order to manage construction supplies per floor, per apartment, per unit, per team (*task work*), for a determined work period (*work billable in the month*).

• Adjustment on perspectives of photos

Transform photographs of buildings (*viewed in perspective*) in geometrical views (*front views*) with scaling, for the purpose of surveying, estimates, etc.



Tools allow you to reconstitute the complete deployment of the building in order to manage all of the works in a single view.

• Carpentry bill of quantities

Library objects (*purlins, rafters, battens*) can be placed at the same time on roofing panels according to specific criteria (*sections of the wood pieces, spacing, etc.*).

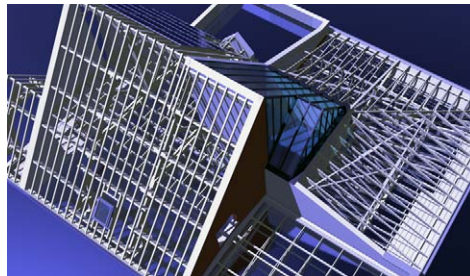
This tool allows you to set:

- The reference point of the element
- The thickness of the roof panel
- The total distance between two points on a roof panel
- The gap of the first element

- Intervals, the amount of the desired elements, headers, etc.

- The last interval.

Other elements (*valleys, hips*) can be added piece by piece. At the same time, it is possible to model the traditional carpentry on sections or 3D views based on pre-recorded elements (*hip rafters, tie beams, hallmarks, struts, hammer beams...*).



© Maisons France Confort

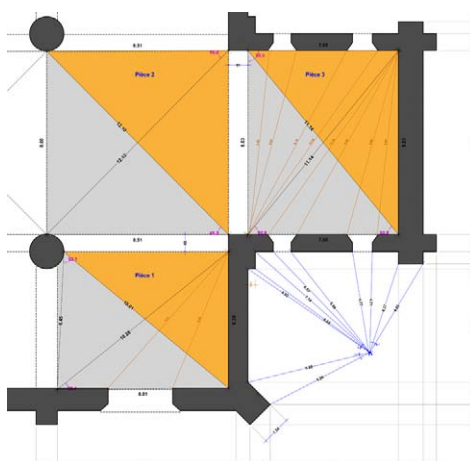
• Bill of quantities for electricians and plumbers

A standard description by room can be saved in the library and can produce an estimate without needing to draw a single 2D symbol.

The bill of quantities and estimate can also be generated by tracing the implementation plans, indicating the nature of the equipment and its exact location. You can also obtain the linear paths of sheaths, cables and pipes.

• Records and bills of quantities of old buildings

Starting from a freehand sketch in KutchCAD®, the drawing adjusts automatically to each piece of data coming from the laser distance meter or Leica® Builder station (*Bluetooth® connected devices*).



Collecting openings, pillars and columns (*position, width, height*) can be done from a single point, the measuring device then being mounted on a tripod.

The survey of roofs is managed from ground level, each face having been reconstructed by measuring the altitude

of three points.

For complex roofs measured from the roof, the survey is performed as it is for parts. Once the elevation of the gutter or ridge line is known, entering a third point on the roof is enough for the software to derive the slope: 3D dimensions will be retained irrespective of this slope. Only the plan view will be automatically adjusted as a result.

Possible upgrades

Based on the ArchiTECH.PC® drawing engine, KutchCAD® is developed for the sole purpose of making bills of quantities on plans provided by third parties. For economists and for construction companies that would like to also produce plans, carry out synthesized images and insertions into the site, it is possible to upgrade KutchCAD® to ArchiTECH.PC® First Edition in order to have different options that allow you to customize it to fit your business activity.

MINIMUM SYSTEM REQUIREMENTS:

- Windows® XP, Vista, 7, 8, Server 2008 and 2012 in 32 or 64 bits
- Intel® Core i-7-4770 (3.40 GHz) or equivalent
- SSD 120 Gb, including 400 Mb for ArchiTECH.PC® and 7 Gb for textures of the Render+ option
- HDD 500 Gb for datas
- 4 Gb RAM
- 1280x1024 resolution, True Color
- NVIDIA® GeForce® GTX 760, 2 Go dedicated Display Card
- Keyboard, mouse, printer, Windows® printer drivers

For more information, visit www.edicad.com or write to info@edicad.com



EDICAD

EDICAD sarl - 31 rue des Pinsons
La Croix de Fer - 46000 CAHORS - FRANCE
Phone: +33 (0)5 65 23 91 79
FAX: +33 (0)5 65 23 04 65

EDICAD, ArchiTECH.PC, KutchCAD, PhotoMEASURE are registered trademarks. All other brand names, products, or commercial designations cited in this document are the property of their respective holders. EDICAD™ reserves the right to change offers and specifications of its products at any time and without notice, and does not accept responsibility for graphic or typographical errors that may appear in the present document.

Illustrations are non-binding.

© EDICAD™ 2015 - All rights reserved