

# Architech.PC® 2019



Architech.PC® handles a complete range of construction tasks, including drawing, imaging, construction site insertion, documentation, etc. Whether you're an architect, general contractor, home builder, economist, or entrepreneur, Architech.PC's ingenious modularity allows you to purchase only the features required for your particular profession.

*Architech.PC® 2019 allows you to process projects of varying complexity using a simple, user-friendly interface and tools dedicated to the specifics of your activity, whether in reference to large-scale, end-to-end projects (architects, contractors, home builders), or smaller-scale technical studies involving BIM (engineers, economists, businesses, artisans, merchants).*



### New status bar management features

The status bar formerly appearing at the foot of every window has been moved to a fixed position below the menu bar independent of the current view, with content customisable as desired for each view type (2D, 3D, plot view).

Bar icon sizes and text font can also be configured to facilitate display on high-resolution monitors (2K, 4K, etc.). Finally, left-click/right-click mouse operation has been replaced with the left-click/Shift+click system standard for Windows® operating systems.

### Non-modal dialog boxes

All of the following may now be displayed simultaneously :

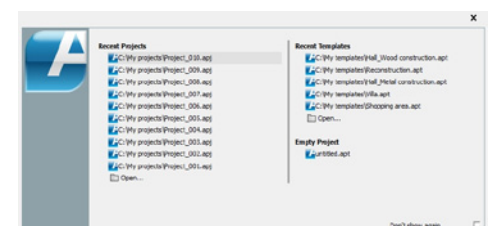
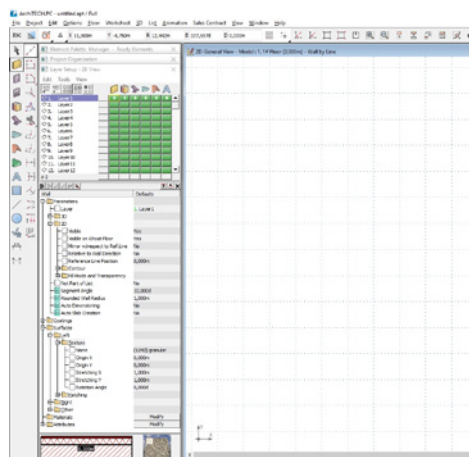
- **Project organisation**
- **Layer setup**
- **Element palette management**
- **Element parameters**

such that the user can step to another dialog box without closing the previous one..

### Start page

When the program is launched, a dialog box appears, offering the following options:

- open a recent project
- begin a new project
- open a template file from the offered list.



### New library units

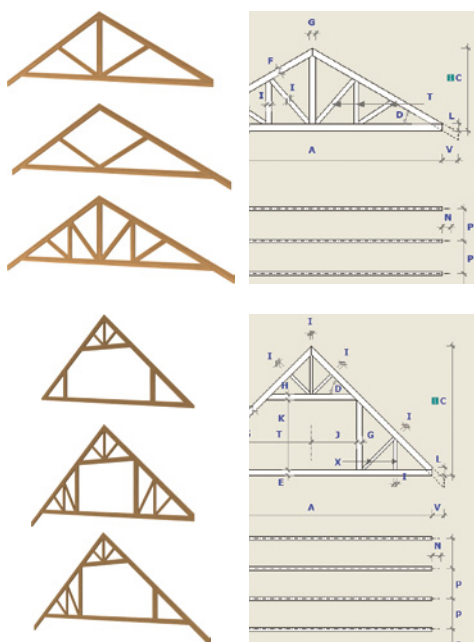
The library has been expanded to

include a range of **new external doors** whose models have been provided by the manufacturers.



**Two new, configurable roof structure types** have also been added:

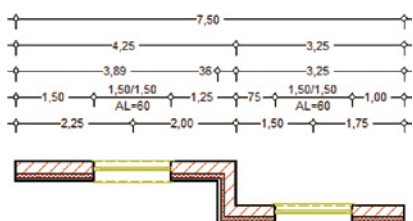
- roof structure with liveable attic space incorporated
- roof structure without liveable attic space.



### Automatic dimensioning

ArchiTECH.PC® permits several walls, including walls with window/door openings, to be dimensioned simultaneously, in a single step. Supplemental parameters can be used to configure dimensioning lines and the distances between them:

- Full dimension
- Interior dimension
- Interior dimension and door/window axes
- Interior dimension and perpendicular adjoining wall thickness.

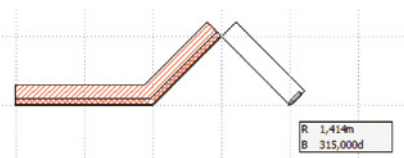


### Tool parameters

Drawing tool parameters are additionally accessible via a tree view located adjacent to the toolkit. Parameters can be modified without interrupting the drawing operation.

### Increased drawing precision

While drawing, the pending wall body is displayed from the start point to the current cursor position, permitting reference lines to be positioned precisely. The positions of walls with respect to reference lines can also be modified during the drawing process.



### Ready element management

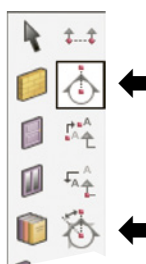
Some operations pertaining to ready elements can be performed in one step: **modify selected ready element; delete or add material and/or attribute of selected ready element.** Ready elements configured for a given project are placed in a dedicated system-level library, rendering it unnecessary to import them every time a new template is created.

### New symbol for elevation drawing

Elevations are no longer created using the section line tool, but with a set of symbols provided specifically for the purpose.



The symbols are placed and their directions modified using the appropriate tools.



### More intelligent cursor shapes

The cursor's shape changes according to the current operation and the drawing element encountered:



- 1- Signals a wall reference line endpoint in default mode
- 2- Signals a wall reference line in default mode

- 3- Base cursor shape during data input
- 4- Signals a hot spot during data input
- 5- Signals a hot line during data input
- 6- Signals a wall reference line endpoint during data input
- 7- Signals a reference line during data input
- 8- Signals a hot line and its midpoint during data input
- 9- Signals a hot line and its midpoint during data input with angle measure locked
- 10- Signals the direction perpendicular to a reference line during data input with x-coordinate locked

### Virtual viewing

By computing realtime stereo views, an Oculus® headset connected to ArchiTECH.PC® gives you the unique experience of total immersion in your 3D project.



### Project thumbnail

Each project can be assigned its own thumbnail for display next to its name in the Windows® file manager.

### \*.SKP file import/export

ArchiTECH.PC® offers SketchUp® file import/export capabilities.

### MINIMUM SYSTEM REQUIREMENTS:

- Windows® XP, Vista, 7, 8, 10, Server 2008 and Server 2012 in 32 or 64 bits
- Intel® Core i-7-4770 (3.40 GHz) or equivalent
- SSD 120 Go, including 400 MB for ArchiTECH.PC® and 7 GB for the textures of the Render+ option
- HDD 500 GB for data
- 4 GB for RAM
- Resolution 1280x1024, 16 million colors
- NVIDIA® GeForce® GTX 760 card with 2 GB dedicated to graphics
- Keyboard, Mouse, Printer with Windows® Print Drivers®

For more information, visit [www.edicad.com](http://www.edicad.com) or write to [info@edicad.com](mailto:info@edicad.com)



EDICAD sas - 31 rue des Pinsons  
La Croix de Fer - 46000 CAHORS - FRANCE  
Phone: +33 (0)5 65 23 91 79  
FAX : +33 (0)5 65 23 04 65

EDICAD, ArchiTECH.PC, KutchCAD, PhotoMEASURE are registered trademarks. All other brand names, products, or trade names mentioned herein are the property of their respective owners. EDICAD™ reserves the right to modify the offers and specifications of its products at any time and without notice, and shall not be held responsible for any graphic or typographic errors that may appear in this document.

Illustrations are not contractually binding.  
© EDICAD™ 2018 - All rights reserved